

## DC-70

Diagnostic Ultrasound System

# Quality exams at your fingertips

## X-Insight



# X-Insight

## An insightful solution to envision more

Mindray's brand-new solution is an excellent transforming of continuous customer insights into clinical needs, combined with evolving cutting-edge ultrasound technologies.

Full of vitality, with the goal of insight into the future and pursuit of the unlimitedness, it is constantly improving with increased scalability.



## High efficiency with precision imaging

As an intimate partner, DC-70 with X-Insight focuses on what matters to you, helping you manage your daily clinical practice with ease and certainty.

Based on deep insights into customer needs, the DC-70 with X-Insight is designed to deliver high efficiency with precision imaging, which is empowered by eXpress clarity and eXceptional Intelligence, and benefits from a eXceeding experience.

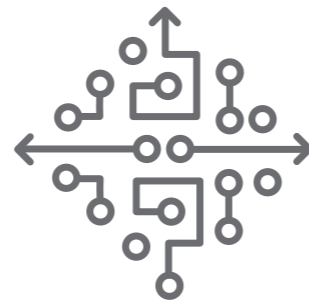
# eXpress Clarity

## More clarity at hand

To achieve excellent images with minimal effort is your highest priority and our endless pursuit. With continuous innovation of imaging and transducer technologies, the DC-70 with X-Insight delivers immediate clarity with "Touch and Bingo" to allow you to get the optimal images that you need immediately, as soon as the transducer touches the body.

## Thunder-speed imaging powered by X-Engine

The new X-Engine integrated with both GPU and CPU enables multi-core parallel processing for fast imaging and superb clarity. With the advanced imaging engine, the imaging processing speed is accelerated three or four times faster than traditional processing, resulting in extremely fast imaging and superb clarity for 3D/4D and other applications.



## Superb visualization with Hyaline

Comprehensive upgrading on iLive to significantly improve the detail resolution as well as anatomical realism. Hyaline is a new rendering method that dynamically applies transparency to rendered structures for a more comprehensive view of anatomy, therefore better displaying internal anatomy from a solid surface.



Fetal spine with Hyaline

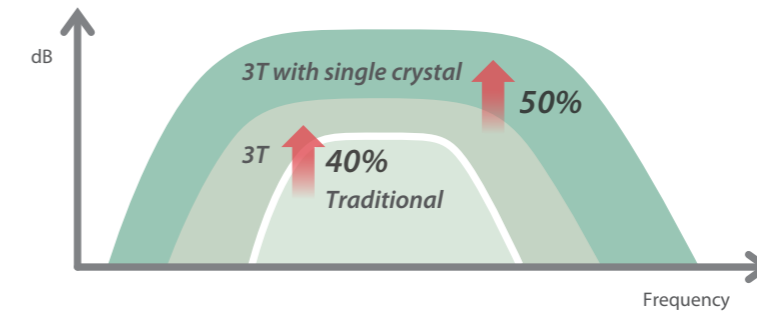


7W embro 3D with Hyaline

## "Touch and Bingo" with premier transducers

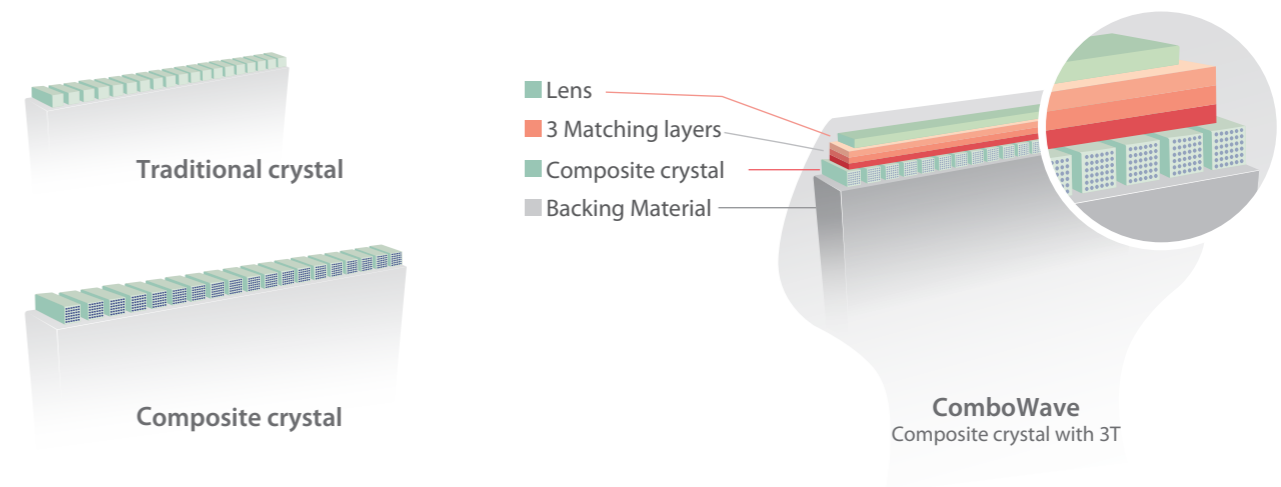
### Single crystal transducers with 3T technology

Combining with Mindray's unique 3T technology (Triple-matching layers, Total-cut design, Thermal control), the brand-new single crystal volume, convex and phased array transducers provide a wider bandwidth to simultaneously offer better penetration and higher resolution, resulting in an optimum scanning solution in OB/GYN, ABD, Cardiology, and more.

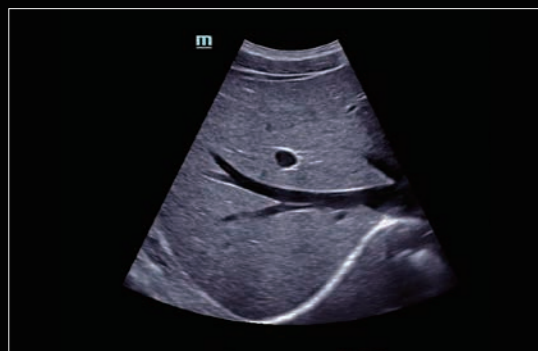


### ComboWave transducers

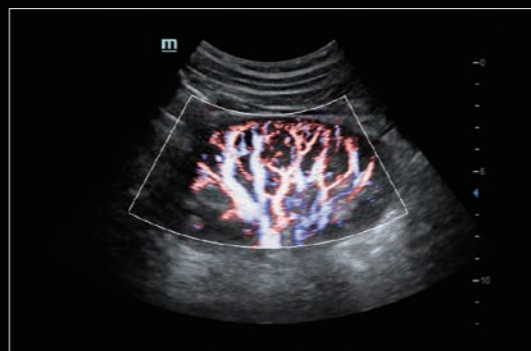
Compared with traditional transducers, ComboWave transducers utilize a new type of composite piezoelectric material to dramatically optimize the acoustic spectrum and reduce acoustic impedance. Further integrated with Mindray's unique 3T technology, the ComboWave linear transducers allow you to experience outstanding performance with extreme image resolution and uniformity in thyroid, breast, vascular, and more.



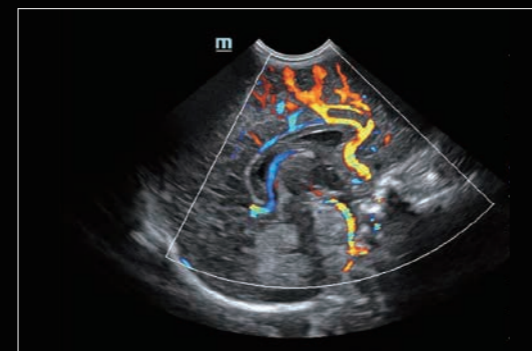
# Image gallery



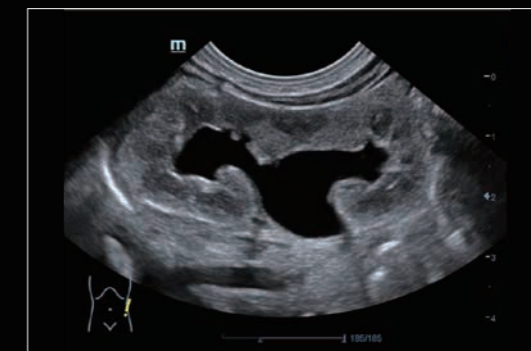
Liver



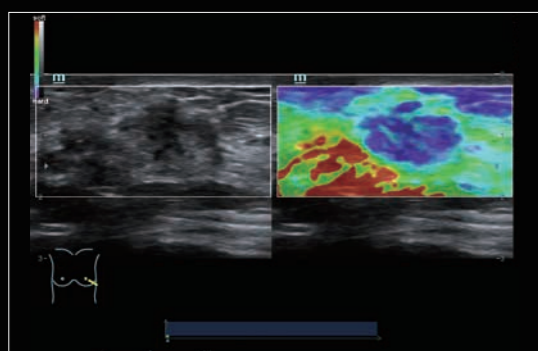
Kidney perfusion with HR Flow



Neonatal cerebral perfusion



Pediatric hydronephrosis



Natural Touch Elastography of breast mass



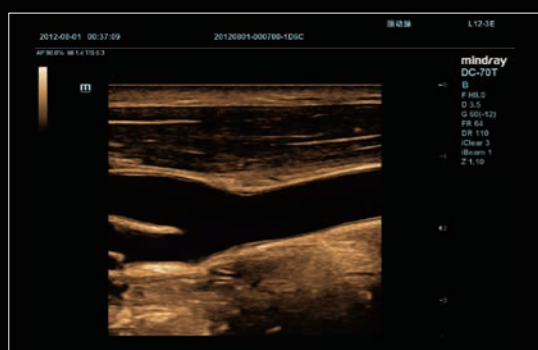
Thyroid adenoma



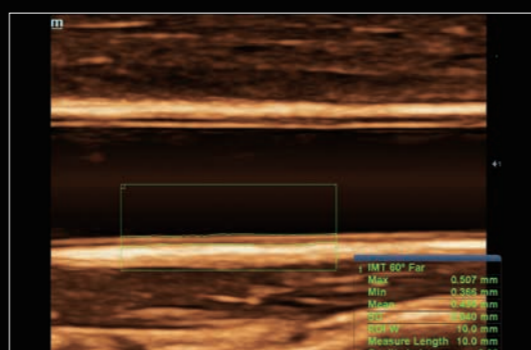
Fetal cleft lip



Fetal heart sclerosis



Carotid bifurcation



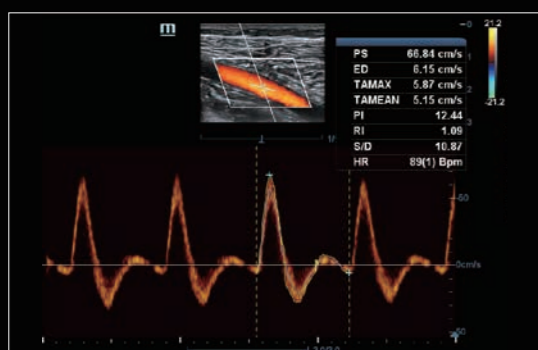
Auto IMT



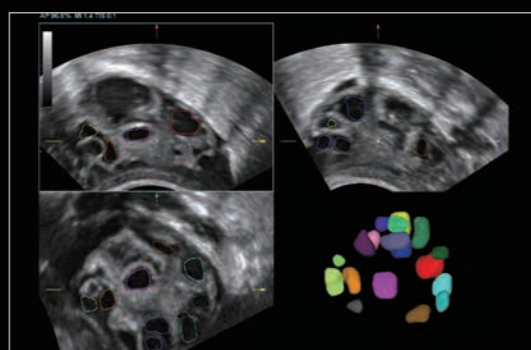
3D fetal face with iLive



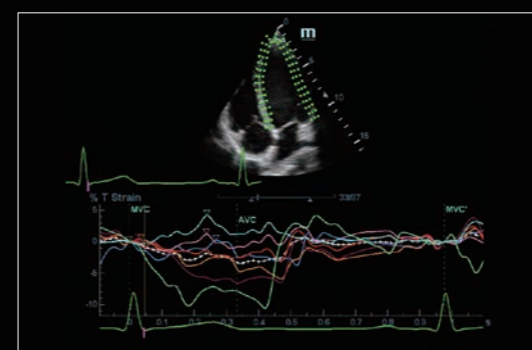
12W fetal profile 3D with iLive



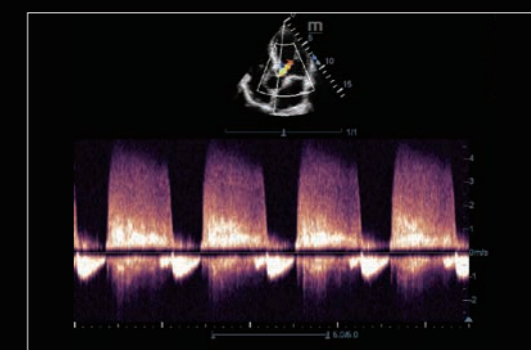
Popliteal artery triplex with auto calculation



Smart FLC



TT QA



Aortic regurgitation

# eXceptional Intelligence

## Intelligence through whole exams

To improve scanning efficiency with more accuracy and consistency, the DC-70 with X-Insight provides eXceptional Intelligence throughout the entire exam workflow, from plane acquisition to image optimization, and from calculation to exam protocol, with rich tools such as Smart Planes CNS, Smart Face, Smart Track, iTouch, Smart FLC, Smart OB/NT, Auto EF, Auto IMT and iWorks.



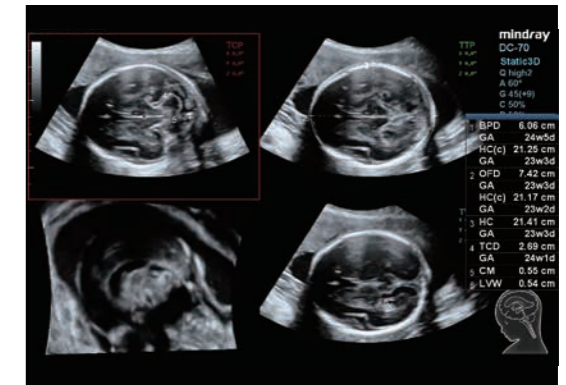
### Simplicity with auto image optimization --- Smart Face

Smart Face provides a fast and intelligent optimization for fetal face with simply one-touch operation. It immediately removes occlusions, such as cord, placenta, uterus and extremities, in the volume data and eliminates unwanted noise information, so finally generates an optimal view of the fetal face with more simplicity.

### Accuracy with smart acquisition

#### --- Smart Planes CNS

Smart Planes CNS is a user-friendly tool that greatly increase scanning accuracy coupled with fully automated operation, leading to an accurate diagnosis, improved through-put, and reduced user dependency. With a simple button-click on a 3D fetal brain volume image, the standard CNS scanning planes (MSP, TCP, TTP and TVP) and a range of related anatomical measurements (BPD, HC, OFD, TCD, CM and LVW) are obtained immediately with high accuracy.

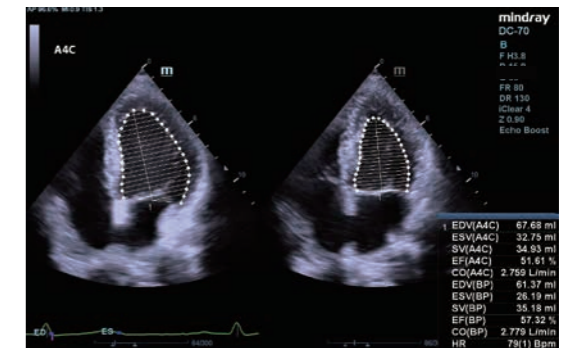


Smart Planes CNS

### Productivity with auto calculation

#### --- Auto EF

Auto EF is an intelligent way to analyze 2D echo clips to automatically recognize diastolic & systolic frames and output a series of measurements to evaluate left ventricle function for more productivity, such as EDV/ESV/EF.



Auto EF

### Consistency with exam protocol

#### --- iWorks

iWorks takes advantage of the built-in standard scan protocols for more consistency and reduces the exam time by up to 50%. The highly flexible and powerful feature is further enhanced with user-defined capabilities.



iWorks

# eXceeding Experience

## Experience with high productivity

eXceeding experience in scanning results in more patient focus for high quality exams in both clarity and ease of use. The DC-70 with X-Insight provides outstanding ease of use with better ergonomics, easier scanning, and flexible management, even beyond your expectations.

### Unique dual-wing floating arm with 21.5"/23.8" monitor

Mindray's exclusive dual-wing delivers an unlimited angle floating design for extremely flexible monitor positions according to clinical needs. The folded dual-wing also minimizes system body height for easy transportation.

### 13.3" ultra-slim multi-gesture touch screen with angle adjustment

Powerful gesture-based operation opens up a new trend in cart-based ultrasound with an agile, smart, and intuitive user experience beyond your expectations.

### Interactive ultrasound APP --- MedTouch

MedTouch is a one-stop solution for a smarter way to control ultrasound devices, and access patient data and inbuilt tutorial software via your IOS/Android operated smart devices.



## Envision more with X-Insight

The future of patient care and clinical requirements are vastly changing. With ultrasound technology evolving, Mindray is listening to you, understanding your clinical needs, and providing you with the most advanced clinical solutions.