

The materials and information provided via this brochure are distributed internationally, but not all the products or services found on this brochure are necessarily available in your country or area. Please contact local office or agents to make sure of the availability of the relevant products or services.

Mindray Medical Netherlands B.V.

Drs.W.van Royenstraat 8, 3871 AN Hoevelaken, The Netherlands
Voice: (31-33) 254-4911
Fax: (31-33) 253-4280

Mindray Medical Italy S.r.l.

Via Girardo Patecchio, 4 20141 Milano, Italy
Voice: (39-02) 5737-401
Fax: (39-02) 5523-2018

Mindray Medical España S.L.

Avenida Manoteras 38, Edificio B, Bajo B008. 28050-Madrid Spain
Voice: (34-91) 392-3754
Fax: (34-91) 392-3756

Mindray Medical Germany GmbH

Zwischen den Bächen 4, 64625 Bensheim, Germany
Voice: (49) 6251-17524-0
Fax: (49) 6251-17524-0

Mindray (UK) Limited

3 Percy Road, St Johns Park, Huntingdon, Cambs,
PE29 6SZ United Kingdom
Voice: (44) 1480-416-840
Fax: (44) 1480-436-588

Mindray Medical France SARL

Europarc Creteil 1 allée des cerisiers 94000 CRETEIL, France
Voice: (33-1) 4513-9150
Fax: (33-1) 4513-9151

Mindray Medical Sweden AB

Rissneleden 136, 174 57 Sundbyberg, Sweden
Voice: (46) 8 555 54 121
Fax: (46) 8 555 54 101

Mindray Medical Rus Co.Ltd

2 Zvenigorodskaya Street, 13, bld 41, 123022 Moscow, Russia
Voice: (7-499) 553-6036
Fax: (7-499) 553-6039

Mindray Medical Colombia S.A.S

Room No.702, Torre UNIKA, Carrera 9 No.77-67, Bogota, Colombia
Voice: (57-1) 3130892 / 3210916

Mindray do Brasil – Comércio e Distribuição de Equipamentos Médicos Ltda.

Rua Tavares Bastos, 329, Perdizes, São Paulo - SP, CEP 05012-020
Voice: (55-11) 3124-8026
Fax: (55-11) 3078-8035

Mindray Medical Mexico S. de R.L. de C.V.

Félix Parra # 175 Colonia. San José Insurgentes Sur Delegación Benito Juárez 03900 México, D.F.
Voice: (52-55) 5661-9450 / (52-55) 5662-6620
Fax: (52-55) 5662-6597

PT.Mindray Medical Indonesia

The East 11th Floor, Unit 08 Jl. Dr. Ide Anak Agung Gde Agung Kav. E 3.2 No.1 Jakarta 12950
Voice: (6221) 2902-7280
Fax: (6221) 2902-7283

Mindray Medical Egypt

Ground Floor -11 El Imam Metwally El Sharawi Street, Sheraton Heliopolis - El Nozha, Cairo, Egypt
Voice: (2) 02 22691047
Fax: (2) 02 22691046

Mindray Medical India Pvt. Ltd. (Delhi Office)

Unit No. 401/402 & G-31, NDM-1, Netaji Subhash Place, Wazirpur District Center, New Delhi - 110 034.
Voice: (91-11) 4923-0000
Fax: (91-11) 4923-0030

Mindray Medical India Pvt. Ltd. (Mumbai office)

B-404, City Point, Andheri Kurla Road, Andheri East, Mumbai, 400 059, India
Voice: (91-22) 4020-0000
Fax: (91-22) 4020-0011

Mindray Medikal Teknoloji İstanbul Ltd. Şti. (Customer Service Address)

Turan Güneş Bulvarı Aleksander Dupçek Caddesi NO:18/A Yıldız Çankaya, ANKARA Zip: 06550 İstanbul, Turkey
Voice: (90-312) 441 96 92
Fax: (90-312) 441 96 93

Mindray Medikal Teknoloji İstanbul Ltd. Şti. (Ankara office)

Turan Güneş Bulvarı Aleksander Dupçek Caddesi NO:18/A Yıldız Çankaya, ANKARA Zip: 06550
Voice: (90-312) 441 96 92
Fax: (90-312) 441 96 93

Mindray Vietnam

Unit 2, 4th Floor, "B" Building, Broadway Office Park, 102 Nguyen Luong Bang Blvd., Tan Phu Ward, Dist. 7, HCMC, Vietnam
Voice: (84) 8 5413-6970
Fax: (84) 8 5413-6971

Mindray Medical Thailand Limited

1768 Thai summit Tower Room 407, 4th floor, New petchaburee Road, Kwaeng Bangkapi, Khet Huai Khwang, Bangkok 10320, Thailand
Voice: (66) 2652-788
Fax: (66) 2652-266



Experience Color with Z5 new

Portable Color Doppler
Diagnostic Ultrasound System

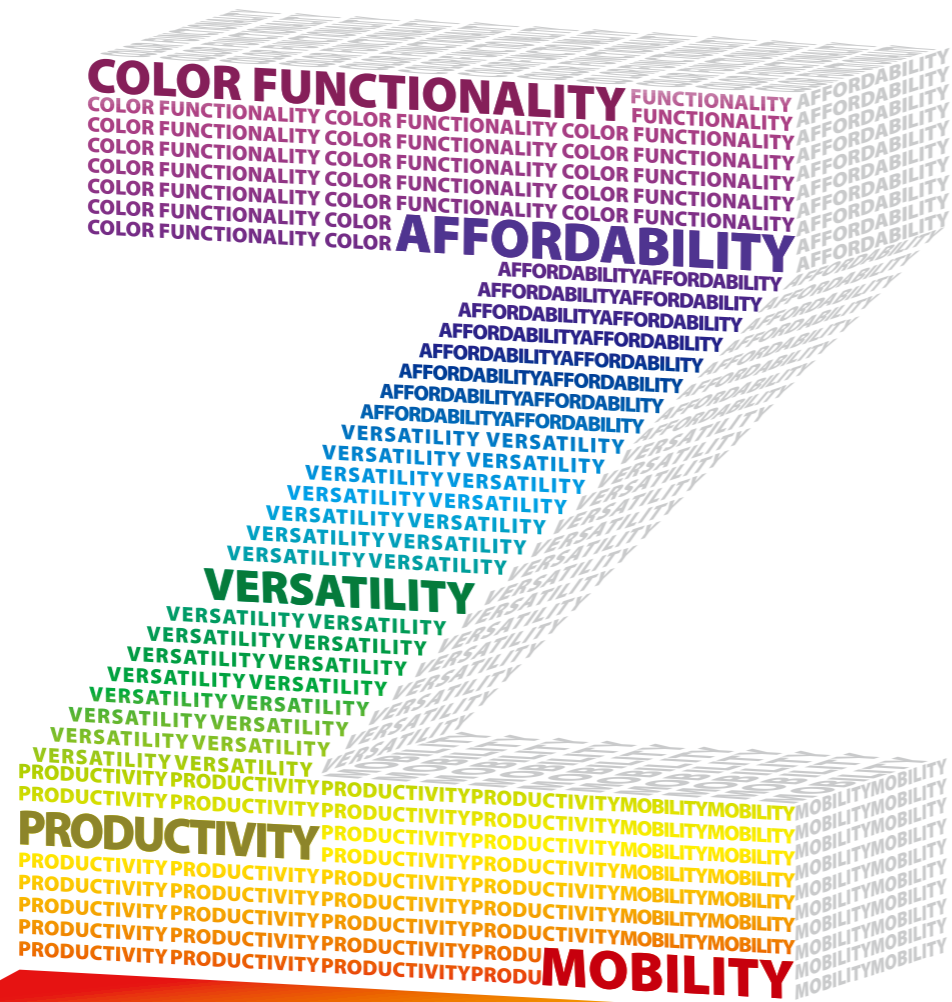


mindray is a trademark owned by Shenzhen Mindray Bio-medical Electronics Co., LTD.
Specifications subject to changes without prior notice.
© 2012 Shenzhen Mindray Bio-medical Electronics Co., LTD. All rights reserved.
P/N:ENG-Z5-210285x4P-20121023



Mindray is listed on the NYSE under the symbol "MR"
Mindray Building, Keji 12th Road South, High-tech Industrial Park,
Nanshan, Shenzhen 518057, P.R. China
Tel: +86 755 8188 8998 Fax: +86 755 26582680
E-mail: intl-market@mindray.com Website: www.mindray.com

mindray
healthcare within reach



Experience **COLOR FUNCTIONALITY** without compromising your budget

Switch to Z5 for a diagnose that is complete in all aspects, including **AFFORDABILITY, VERSATILITY, PRODUCTIVITY** and **MOBILITY**

VERSATILITY

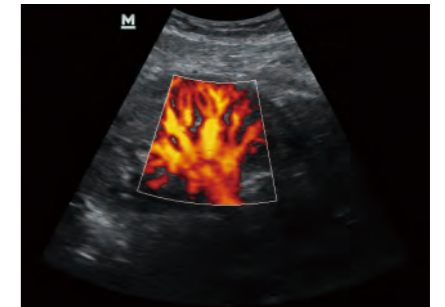
- Scanning modes: B, Color, PW, Power, M, FreeXros M
- Image display modes: B, 2B, 4B, B/C, B/M, B/PW, Triplex PW
- Applications: ABD/OB/GYN/CAR/SML/URO/VAS/ORTH/EM/NERVE
- Transducer variety : Convex, Linear, Micro-convex, Endocavity
- Extended scanning angle with ExFov function
- High frequency linear probe for superficial scanning
- Compatible with Mindray's B/W ultrasound transducer series
- Full application comment library and body mark



Liver

PRODUCTIVITY

- iTouch: Quick image optimization with one-click
- iZoom: Instant full screen zoom with one-click
- iStation: Patient database review and analysis platform
- iStorage: Direct data transfer to PC
- Clipboard: Easy play, preview and sharing of cine loop
- Multiple image formats : BMP, JPG, DCM, AVI, DCM, CIN
- Fast response: Rapid system boot-up within 30s



Kidney Power Flow

MOBILITY

- Compact and streamlined design weighing 7.7kg
- 15" LCD monitor with 30 degree tilt function
- Dual universal transducer connectors
- Two level backlit keyboard for varying requirements
- Specifically designed trolley, UMT-160, for easy mobility
- Can be packed in a convenient hand-carried bag for easy transportation
- 1.5h uninterrupted scanning with rechargeable battery
- Extra battery is optional for extended scanning time

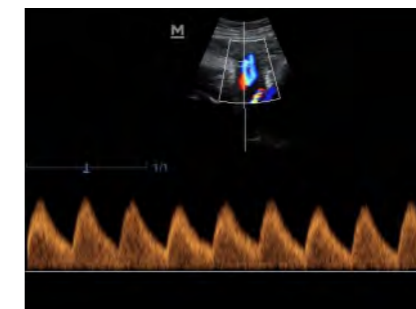


Hydronephrosis

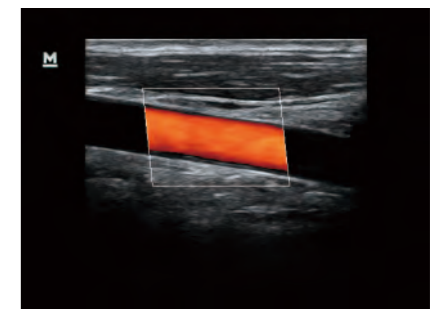
Your unique requirements of superior image quality, affordability , versatility and, mobility can now be met with the new portable Color Doppler system Z5. With a rare combination of high performance and low cost, the Z5 is the result of Mindray's continuous efforts towards making healthcare more accessible to humanity. Be it an indoor abdominal scan, or an outdoor emergency requirement, the Z5 can be used limitlessly for various applications. **Switching from conventional Black & White systems to a highly efficient portable Color Doppler system, has now been made easier than ever before, making it possible for you to reach beyond boundaries.**



Gall Stone



Umbilical Artery Flow



Carotid Flow